



computer



camera



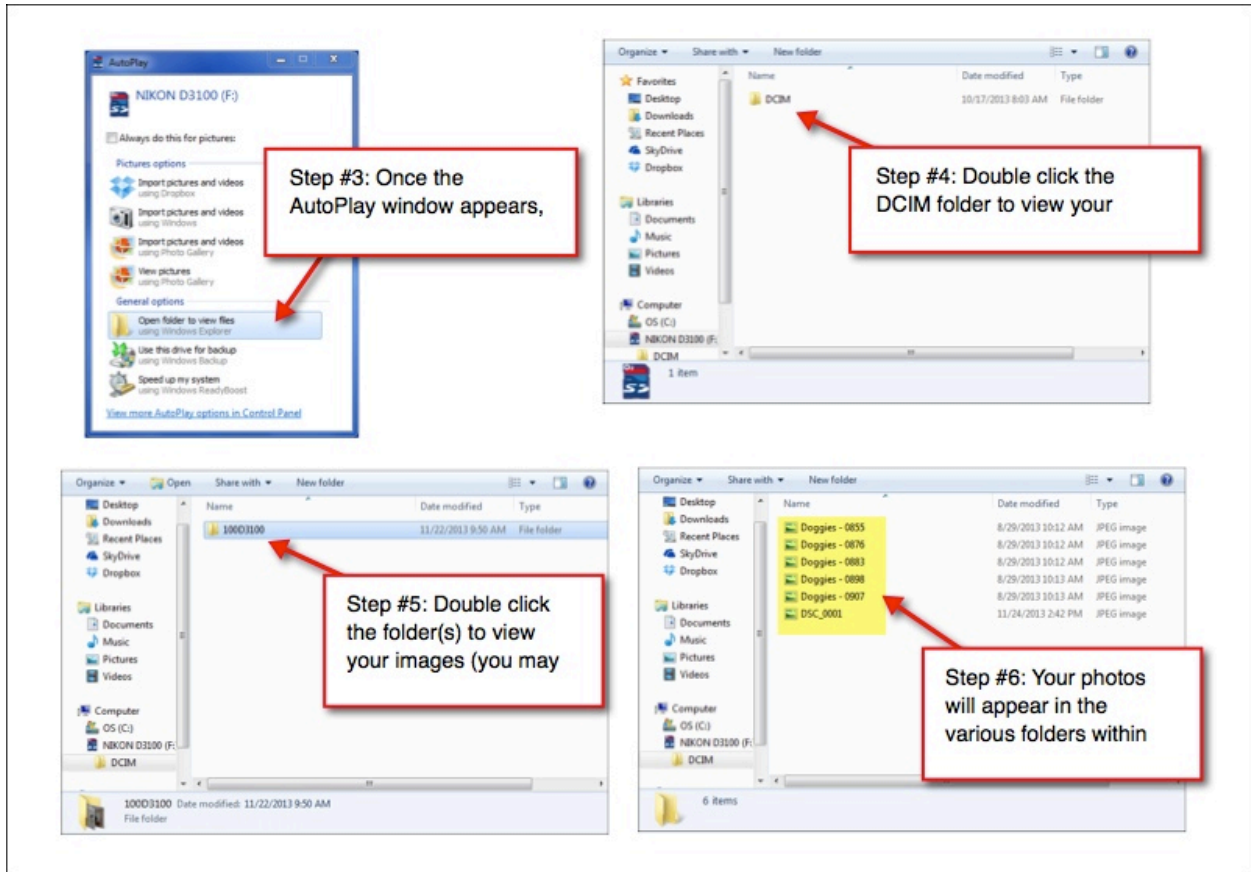
memory card

Make sure you have the items above in order to transfer pictures from your camera to your computer.

Step #1: Eject the memory card from the camera.



Step #2: Eject the "dummy" card from the computer. Then, insert the memory card from your camera into the card reader.



 **Screencast: Transfer images from memory card to laptop**
<http://www.screencast.com/t/MOyNykdYLsh>